

2024/25

INTRODUCTION FILE
PRODUCT WE SUPPLY AND SERVICES
WE PROVIDE

STATE
ELEKTRIK

— ABOUT US

STATE is an energy, contracting, procurement and consultancy company based in Turkey and the Balkans. It continues to realize successful energy projects with its specialized technical and administrative staff. STATE's main mission is to realize high quality energy facilities with the highest technology, competitive costs and the right application technique.

STATE continues to realize permanent projects by staying up-to-date in the rapidly changing and constantly renewed energy sector. With its expanding staff and supply network, STATE's goal is to be a pioneer in the energy sector by realizing efficient and long-lasting projects.



— OUR VISION

We want to make the STATE brand a reliable and sustainable brand by working with strong business partners in select projects.

— OUR MISSION

Contributing to social welfare by creating a new future and inspiring the world with innovative technologies.

— OUR GOAL

To be a pioneer in the energy sector by realizing efficient and long-lasting projects.



SERVICES WE PROVIDE

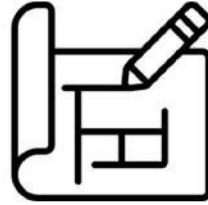
FEASIBILITY STUDY

We investigate whether the project you want to realize is fit for purpose and eliminate deficiencies.



PROJECT DESIGN

Before the installation, we make all the calculations of the project in accordance with the feasibility studies and prepare the final project to be implemented on site.



MATERIAL SUPPLY

We supply the highest quality materials in the brand you demand for any project you want to realize.





INSTALLATION

We examine your projects down to the finest detail, realize turnkey installation and deliver them to you.



APPLICATIONS

We complete all the documents required by official institutions for the installation of your project and obtain the necessary permits.



PERIODIC MAINTENANCE

We regularly maintain the installed facilities every year and provide service when necessary.



ROOF SPP PROJECTS

We provide turnkey implementation of solar energy systems with the most suitable placement on the roofs of your residential or industrial facilities.

SOLAR CHARGING PROJECTS

We make Car-Port (Canopy) SPP installations in different locations such as residences, parking lots and shopping malls to feed the charging stations of your electric vehicles, whether it is one vehicle or a thousand vehicles. Our constructions, all of which are produced in our own facilities, are mounted on your parking lots in the design you want on a turnkey basis.



FIELD TYPE PV PROJECTS

We realize your land GES applications as soon as possible with our expert staff on turnkey basis and deliver them to you ready for use by completing all acceptance procedures.

AGRICULTURAL IRRIGATION PROJECTS

According to the amount of water you need in your field, we make the selection / design of the water pump and the required gas system, taking into account the depth of the water well and the distance to which the water is pumped, and we save you from the electricity bill for your irrigation works. You can supply the same system as battery powered if you wish and you can perform your irrigation operations in the evening.



MAINTENANCE OF INSTALLED PV PROJECTS

In order to prevent the loss of efficiency of your solar power plants installed on your land or roof, we clean the panels and take precautions against problems that may occur by checking components such as inverters, panels, cables.

MOBILE SOLAR SYSTEMS

Wherever you need energy, you can connect our mobile solar systems to your vehicle and make them ready for use. Our O2 transportation certified systems can be transported to the desired locations in irrigation, lighting, heating, communication and possible disaster situations and can be ready for use within minutes.





Solar Powered Cold Room

With solar-powered container type cold storages, you can store your products 24/7 wherever you want, independent of mains electricity.

With solar-powered container type cold rooms, you can easily solve cold storage problems and post-harvest loss problems in perishable foods such as fruits, vegetables, meat and meat products.

Due to its portability, solar container type cold storages can be easily transported directly to places such as farms, animal husbandry and fishery production facilities.

In our solar cold storages, all the components you need such as solar panels, batteries and cooling units are pre-assembled.



COLD STORAGE PANEL SYSTEMS

Available in a variety of module widths, is designed to offer the highest R-value for controlled environment/cold storage needs. Meeting USDA guidelines, Imperial White Siliconized Modified Polyester is the standard finish for making it ideal for food processing projects.

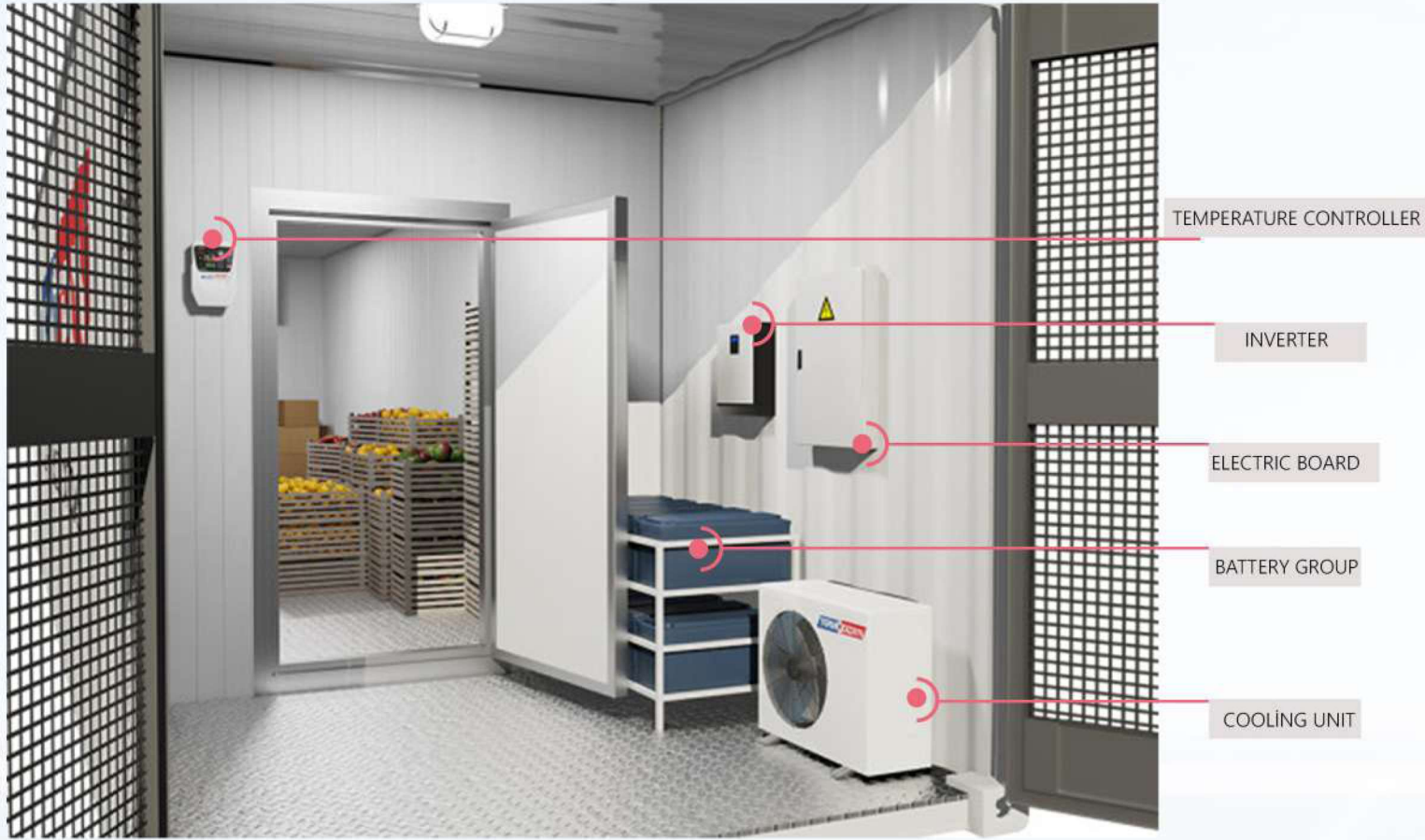
Product Highlights

Designed to meet today's high performance standards in a wide variety of environments
Available in 26, 24 and 22 gauge to meet most design and span requirements
Interlocking tongue-and-groove joint provides supreme foam-to-foam contact and thermal protection
Conveniently produced in multiple manufacturing locations
Suitable for both interior and exterior application



Technical Information

Profile	Exterior: Shadowline Interior: Shadowline
Embossing	Exterior: Stucco or non-embossed Interior: Stucco or non-embossed
Gauge	Exterior: 26, 24, 22 ga Interior: 26, 24, 22 ga
Width	24", 30", 36", 42"
Thickness	2", 2.5", 3", 4", 5", 6"
Length	8' - 53'
Reveal option	3/8" reveal standard for horizontal (1/8" available with exterior joint sealant)
Orientation	Vertical or horizontal
Insulation Core	R-value
QuadCore	≈ 8 per inch per ASTM C518 @ 75°F mean temperature ≈ 9 per inch per ASTM C518 @ 35°F mean temperature



Uses solar panels as an independent energy source. It can generate energy without being dependent on the power grid, thus reducing electricity costs to zero.

High Storage Capacity:

Thanks to its large internal volume, it can safely store large quantities of products. It is especially ideal for storing sensitive products such as agricultural products, fresh food and medicines.

Energy Efficiency:

Equipped with high-performance insulation and energy-efficient cooling systems. In this way, maximum efficiency is achieved from solar energy and the cold storage temperature is kept constant throughout the day.

Environmentally Friendly Design:

Minimizing carbon emissions, this product supports environmental sustainability. It offers the opportunity to use without the need for energy infrastructure, especially in rural areas.

Modular and Portable Structure:

Solar Cold Room Jumbo 3219 can be easily transported and installed in different areas according to the needs. Thanks to its modular structure, it can be customized in various capacities.

Solar Powered Cold Storage - Technical Specifications

This solar cold storage offers an environmentally friendly solution for the safe storage of products in areas with limited energy infrastructure. Powered by highly efficient solar panels, the system provides an independent energy source, reducing energy costs to zero.

Technical Specifications

Energy System:

Equipped with high efficiency photovoltaic solar panels.

It includes an inverter system that converts solar energy into electrical energy.

Thanks to the battery system, it provides uninterrupted energy at night or when sunlight is insufficient.

Cooling Capacity:

Suitable for storing different types of products thanks to its large internal volume.

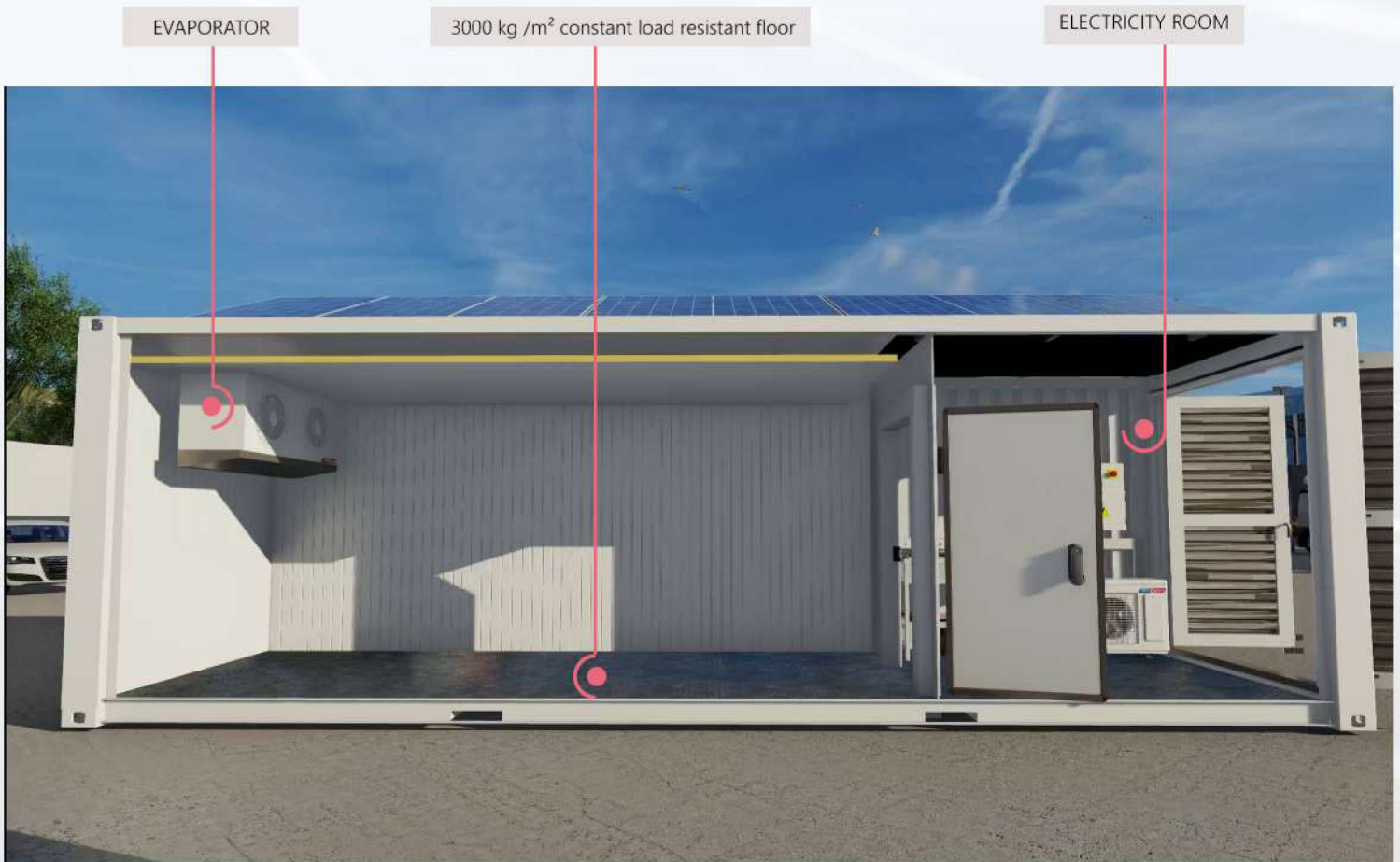
It offers constant cooling temperature with low energy consumption.

Precise temperature control system maintains the freshness of the products.

Insulation:

Energy loss is minimized with thick, high-density insulation panels.

Long-lasting structure resistant to external factors.



ASSEMBLY SYSTEMS SUPPLY

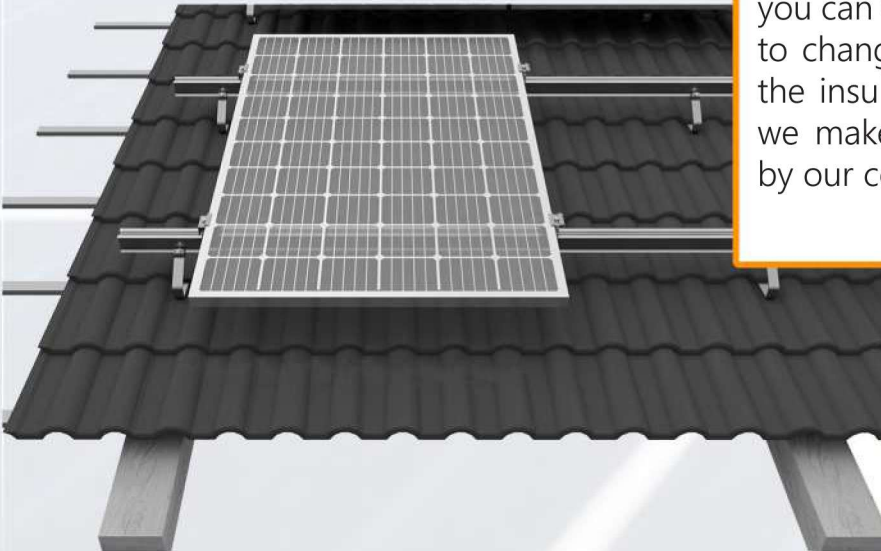
LAND ASSEMBLY SYSTEMS

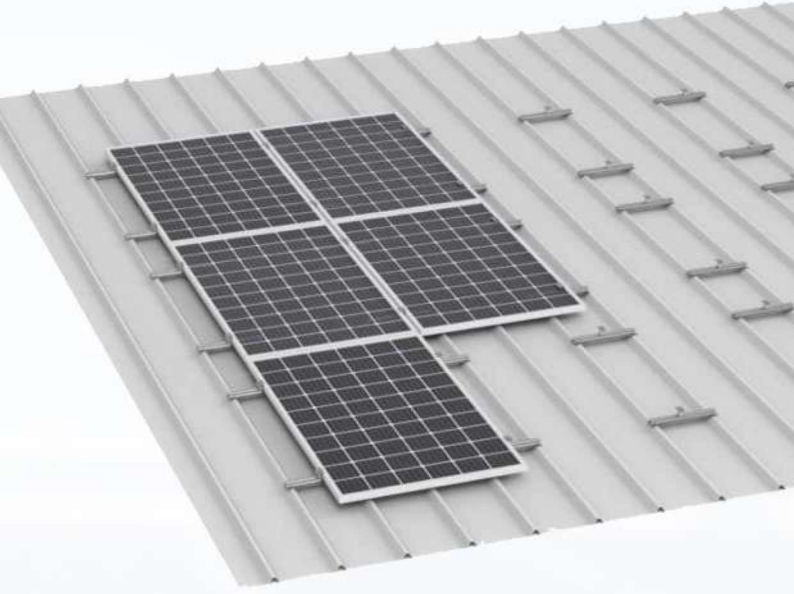
According to the ground survey report made in the location where you will apply the land type solar power plant project, we prepare static projects to take into account the snow load and wind load and according to this report, we produce the necessary construction to be hot dip galvanized. We deliver the construction and all connection equipment to your site.



TILE ROOF MOUNTING SYSTEMS

In residential applications, we offer application solutions for the special assembly set that you can use on tile-type roofs without having to change your tiles and without disturbing the insulation of your roof, and if you wish, we make the necessary application turnkey by our company.





SANDWICH PANEL ROOF MOUNTING SYSTEMS

We deliver the aluminum construction you need for the solar power plant to be applied to your sandwich panel roofs to your site in the quantity and specifications you want together with the connection equipment. We offer a 10-year product warranty with our anodized coating thickness on the products we supply.

FLAT ROOF MOUNTING SYSTEMS

We produce and offer mounting systems solutions to our customers in accordance with the slope and layout you want without disturbing the floor covering and insulation on reinforced concrete flat roofs.



SOLAR MATERIAL SUPPLY

SOLAR PANEL

We supply A+ panels with the highest efficiency by closely following the developments in the sector. We supply PERC and Top Con type 550-735wp panels by participating in the factory acceptance tests of the manufacturers, examining them according to the relevant standards and certifications and shipping them to the field. By comparing the BoM (Bill of Material) lists of the panel manufacturers, we offer you the most suitable panel for your demand in the most economic way.



INVERTER

We deliver world brand inverters such as Huawei, Kaco Siemens, Fronius, Growatt, Hopewind, Deye, Solinved, on-grid and off-grid from stock at any power you wish. We can also supply inverter communication and monitoring systems upon your request.

SOLAR CABLE

We deliver His, Nexans, Hasçelik, Ünal, Alves brand 1x6 cross-section copper solar cables immediately from stock according to the brand, quantity and color (Black-Red) you request.





ENERGY STORAGE SYSTEM

We make the necessary configuration calculations and provide turnkey installation of LiFP (Lithium Iron Phosphate) battery systems so that you can use the solar energy you produce during the day in the evening. We use Huawei brand products in our systems, which we are solution partners and partners.

SCADA AND PV PANEL

We design, design, supply and install SPP and SCADA monitoring panels prepared with ABB brand switchgear in accordance with your projects. You can use our panels with all type-tests and certifications in your domestic and international projects and you can provide commissioning, monitoring and maintenance services from our company upon request.



SOLAR ACCESSORIES

We can deliver solar mounting accessories and equipment such as UV resistant cable ties and spiral pipes with CE certification from stock on the same day. We can also supply hot-dip galvanized or pyrogalvanized cable trays and solar connectors immediately.

ELECTRICAL MATERIAL SUPPLY



OIL TYPE TRANSFORMERS

6.3kV to 36kV primary voltage A+ distribution transformers with hermetic or expansion boiler with copper or aluminum windings, we supply as soon as possible at the most affordable price.

DRY TYPE TRANSFORMERS

For use in your special projects, dry type distribution transformers at different voltage levels up to 5000 kVA power are produced and supplied in a special way for your project.



MV MODULAR SWITCHGEAR

Metal clad MV switchgears up to 40.5 kV and metal enclosed switchgears up to 6.3-36kV are supplied from our partner manufacturers in different switching/relay configurations at the most affordable prices, type tested according to the relevant IEC standards.

MV CABLES

We deliver XLPE cables of Hes, Nexans, Hasçelik brand in different cross-sectional copper and aluminum in the brand, quantity and specifications you request immediately from stock.



LV CABLES

We deliver Hes, Nexans, Hasçelik, Öznur brand NYY, NAYY, N2XH and NA2XH cables in different cross-sectional copper and aluminum in the brand, quantity and specifications you request immediately from stock.

PREFABRICATED KIOSKS FOR TRANSFORMER AND SWTICHGEAR

For your transformer and root buildings, we bring prefabricated buildings in accordance with the relevant TEDAŞ and IEC standards to our customers in the most economical way.



1kV Copper Conductor Heat Shrinkable Joint



→ SUITABLE CABLE TYPES

YVV-U, YVV-R, CU/PVC/PVC, NYY, N2XY

Use for, PVC insulations, HEPR, EPR, XLPE, other side, armour cables, mining, ship, airport lighting, railway, control, telephone, water pump, submersible pump, data and fiber cables.

→ TECHNICAL DATA

Water Absorption	: ASTM D 570 ≤ 0,5 %
Electrical Insulation	: up to 5kV
Joint Shrink Point	: 110 °C
Joint Hardness	: 45-50 Shores D
Tensile Strength	: 12 Mpa
Break down Elongation	: ≥ 400 %
Adhesive Melting Point	: 90 °C
Removed Strength from Steel	: 30 N/cm ² at 23 °C
Appropriate RoHS Standards	
The excellent movement stability and credibility	
Good covering cable, easy mounting, excellent moisture proof and more elasticity	

→ SUITABLE CABLE TYPES

YVV-U, YVV-R, CU/PVC/PVC and NYY

Use for, PVC insulations, HEPR, EPR, XLPE, other side, armour cables, mining, ship, airport lighting, railway, control, telephone, water pump, data and fiber cables.

→ TECHNICAL DATA

Water Absorption	: ASTM D 570 ≤ 0,5 %
Electrical Insulation	: up to 5kV
Joint Shrink Point	: 125 °C
Joint Hardness	: 45-50 Shores D
Tensile Strength	: 14Mpa
Break down Elongation	: ≥ 350%
Adhesive Melting Point	: 90 °C
Zipper	: Stainless Steel
Appropriate RoHS Standards	
Good covering cable, easy mounting, excellent moisture proof.	

1kV Zippered Heat Shrinkable Additional Muffle



→ SUITABLE CABLE TYPES

YAVV-R, AL/PVC/PVC, NAYY

Use for, PVC insulations, HEPR, EPR, XLPE, other side, armoured cables, mining, ship, airport lighting, railway, control, telephone, water pump, submersible pump, data and fiber cables.

→ TECHNICAL DATA

Water Absorption	: ASTM D 570 ≤ 0,5 %
Electrical Insulation	: up to 5kV
Joint Shrink Point	: 110 °C
Joint Hardness	: 45-50 Shores D
Tensile Strength	: 12Mpa
Break down Elongation	: ≥ 400%
Adhesive Melting Point	: 90 °C
Removed Strength from Steel	: 30N/cm ² at 23 °C
Appropriate RoHS Standards	
The excellent movement stability and credibility	
Good covering cable, easy mounting, excellent moisture proof and more elasticity	

1kV Aluminum Conductor Heat Shrinkable Joint Muffle



→ **SUITABLE CABLE TYPES**

YXC7V-R, N2XSY, CU/XLPE/CWS/PVC, N2XSYRY,
YAXC7V-R, NA2XSY, AL/XLPE/CWS/PVC, NA2XSYRY
Use for, PVC insulations, XLPE, armour cables, mining, airport lighting cables.

→ **TECHNICAL DATA**

Water Absorption	: ASTM D 570 ≤ 0,5 %
Joint Shrink Point	: 110-125 °C
Joint Hardness	: 45 - 50 Shores D
Tensile Strength	: 12 Mpa
Break down Elongation	: ≥ 400 %
Adhesive Melting Point	: 90 °C
Cont. Operating Temperature	: -55 °C to 110 °C
Removed Strength from Steel	: 30N/cm ² at 23 °C
Removed Strength from Cable	: 30N/cm ² at 23 °C
Appropriate RoHS Standards	

6kV Single Core Copper Conductor Heat Shrinkable Joint Muffle



36kV Single Core Copper Conductor Heat Shrinkable Joint Muffle

→ **SUITABLE CABLE TYPES**

YXC7V-R, N2XSY, CU/XLPE/CWS/PVC, N2XSYRY,
YAXC7V-R, NA2XSY, AL/XLPE/CWS/PVC, NA2XSYRY
Use for, PVC insulations, XLPE, armour cables, mining, airport lighting cables.

→ **TECHNICAL DATA**

Water Absorption	: ASTM D 570 ≤ 0,5 %
Joint Shrink Point	: 110-125 °C
Joint Hardness	: 45 - 50 Shores D
Tensile Strength	: 12 Mpa
Break down Elongation	: ≥ 400 %
Adhesive Melting Point	: 90 °C
Cont. Operating Temperature	: -55 °C to 110 °C
Removed Strength from Steel	: 30N/cm ² at 23 °C
Removed Strength from Cable	: 30N/cm ² at 23 °C
Appropriate RoHS Standards	

→ **SUITABLE CABLE TYPES**

YXC7V-R, N2XSY, CU/XLPE/CWS/PVC, N2XSYRY,
YAXC7V-R, NA2XSY, AL/XLPE/CWS/PVC, NA2XSYRY
Use for, PVC insulations, XLPE, armour cables, mining, airport lighting cables.

→ **TECHNICAL DATA**

Water Absorption	: ASTM D 570 ≤ 0,5 %
Joint Shrink Point	: 110-125 °C
Joint Hardness	: 45 - 50 Shores D
Tensile Strength	: 12 Mpa
Break down Elongation	: ≥ 400 %
Adhesive Melting Point	: 90 °C
Cont. Operating Temperature	: -55 °C to 110 °C
Removed Strength from Steel	: 30N/cm ² at 23 °C
Removed Strength from Cable	: 30N/cm ² at 23 °C
Appropriate RoHS Standards	

36kV Single Core AL Conductor Heat Shrinkable Joint Muffle



6kV Internal Type Three Core Heat Shrink Cable Head



→ SUITABLE CABLE TYPES

YXC8V-R, N2XSEY, CU/XLPE/CTS/PVC, N2XSEYFGbY
YAXC8V-R, NA2XSEY, AL/XLPE/CTS/PVC, NA2XSEYFGbY
Use for, PVC insulations, XLPE, armoured cables, mining, airport lighting cables.

→ TECHNICAL DATA

Water Absorption	: ASTM D 570 ≤ 0, 5 %
Tensile Strength	: 10 Mpa
Termination Hardness	: 43 - 45 Shores D
Break down Elongation	: ≥ 350 %
Low Temperature Flexibility	: -40 °C/4 Hrs, no cracking
Termination Shrink Point	: 110 °C -125 °C
Cont. Operating Temperature	: -55 °C -110 °C
Appropriate RoHS Standards	

→ SUITABLE CABLE TYPES

YXC8V-R, N2XSEY, CU/XLPE/CTS/PVC, N2XSEYFGbY
YAXC8V-R, NA2XSEY, AL/XLPE/CTS/PVC, NA2XSEYFGbY
Use for, PVC insulations, XLPE, armoured cables, mining, airport lighting cables.

→ TECHNICAL DATA

Water Absorption	: ASTM D 570 ≤ 0, 5 %
Tensile Strength	: 10 Mpa
Termination Hardness	: 43 - 45 Shores D
Break down Elongation	: ≥ 350 %
Low Temperature Flexibility	: -40 °C/4 Hrs, no cracking
Termination Shrink Point	: 110 °C -125 °C
Cont. Operating Temperature	: -55 °C -110 °C
Appropriate RoHS Standards	

36kV Internal Type Three Core Heat Shrink Cable Head



→ SUITABLE CABLE TYPES

YXC8V-R, N2XSEY, CU/XLPE/CTS/PVC, N2XSEYFGbY
YAXC8V-R, NA2XSEY, AL/XLPE/CTS/PVC, NA2XSEYFGbY
Use for, PVC insulations, XLPE, armoured cables, mining, airport lighting cables.

→ TECHNICAL DATA

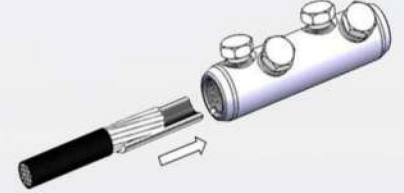
Water Absorption	: ASTM D 570 ≤ 0, 5 %
Tensile Strength	: 10 Mpa
Termination Hardness	: 43 - 45 Shores D
Break down Elongation	: ≥ 350 %
Low Temperature Flexibility	: -40 °C/4 Hrs, no cracking
Termination Shrink Point	: 110 °C -125 °C
Cont. Operating Temperature	: -55 °C -110 °C
Appropriate RoHS Standards	

36kV External Type Three Core Heat Shrink Cable Head



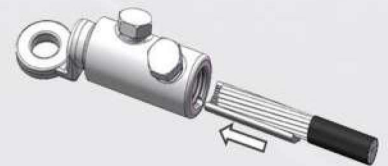
MECHANICALLY TIGHTENED ADDITIONAL MUFFLE

Code	Conductor Size (mm ²)	Outside Diameter (mm)	Number Of Bolts	Wrench Size	Box (pcs)
MSEM 35-150/4	35-150	28	4	17	20
MSEM 70-240/4	70-240	33	4	19	15
MSEM 120-300/4	120-300	38	4	22	10
MSEM 185-400/4	185-400	42	4	22	9
MSEM 500-630/6	400-630	52	6	24	4



MECHANICAL CRIMPED CABLE GLAND

Code	Conductor Size (mm ²)	Outside Diameter (mm)	Number Of Bolts	Wrench Size	Box (pcs)
MSKP 35-150-12/2	35-150	28	2	17	20
MSKP 70-240-12//2	70-240	33	2	19	12
MSKP 120-300-16/2	120-300	38	2	22	9
MSKP 185-400-16/2	185-400	42	2	22	7



HOT AND COLD SHRINKABLE CABLE HOODS

HEAT SHRINKABLE CABLE SPLICES



Medium Voltage Cable Splices



Low Voltage Cable Splices

HEAT SHRINKABLE CABLE HOODS



1 kV Internal Cable Headers



Medium Voltage Cable Headers

COLD SHRINKABLE CABLE HEADERS AND SPLICES



Medium Voltage Cable Headers



Cold Shrink Cable Splice

HEAT AND COLD SHRINKABLE CABLE ACCESSORIES



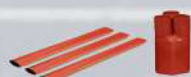
Heat Shrinkable
Closure



Medium Voltage
Surge Arrester



Overhead Line
Closure



Medium Voltage Heat
Shrinkable Vessel Separators



Heat Shrinkable Vertical
and Straight Angle
Insulation Junction Plugs



Medium Voltage
Busbar Insulation Tubes

PLUG-IN CABLE HEADERS



Medium Voltage Flat Type
Plug-in Cable Headers



Medium Voltage L Type
Plug-in Cable Headers

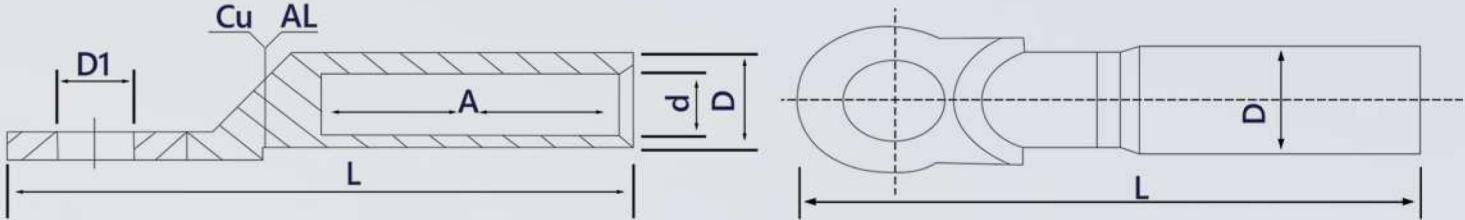


Medium Voltage Flat Type
Plug-in Cable Headers



Medium Voltage P Type
Plug-in Cable Headers

CRIMPED BIMETAL SKP (CABLE GLAND)



CABLE SECTION (mm ²)	BOLT	DIMENSIONS				
		d	D1	D	A	L
16	M12	6,0	13,0	16,0	42,0	90,0
25	M12	7,0	13,0	16,0	42,0	90,0
35	M12	8,5	13,0	16,0	42,0	90,0
50	M10	9,6	13,0	20,0	43,0	90,0
70	M12	11,5	13,0	20,0	43,0	90,0
95	M12	13,5	13,0	20,0	43,0	90,0
120	M12	15,0	13,0	25,0	60,0	115,0
150	M12	16,6	13,0	25,0	60,0	115,0
185	M12	18,5	13,0	32,0	60,0	122,0
240	M12	21,0	13,0	32,0	60,0	122,0
300	M12	23,0	13,0	34,0	62,0	125,0
400	M12	26,0	13,0	38,0	70,0	159,0
500	M18	29,0	13,0	47,0	75,0	167,0
625	120	34,0	21,0	54,0	80,0	200,0

REFERENCE

PROJECT NAME	REGION	KAPACITY/ MW
HELIOS GES (UNDER CONSTRUCTION)	KOSOVO	100,00
VRATSA GES (SUBCONTRACTOR)	BULGARIA	43,00
VESELINOVO GES (SUBCONTRACTOR)	BULGARIA	
ZAHAQ GES	KOSOVO	2,00
AKYOL GES	TURKEY	3,30
OBA MAKARNA GES	TURKEY	2,50
TFA GES	TURKEY	1,15
ÇİNE GES	TURKEY	5,50
MERİÇ GES	TURKEY	3,00
YAKUP YILMAZ BORU GES	TURKEY	1,60
MADENCAN CELİK GES	TURKEY	1,30
GUNGOR MADENCILIK GES	TURKEY	1,60
KESKİN MADEN GES	TURKEY	1,60
KARDEŞLER ALUMINIUM	TURKEY	0,25
ASYA FRESH GES	TURKEY	0,69
SEDA SU GES	TURKEY	1,20
OTHERS (SMALLER THAN 1MW)	TURKEY	17,00
TOTAL		185,69

STATE ELEKTRİK

CENTER OFFİCE

100. YIL BULVARI OSTİM PRESTİJ
İŞ MERKEZİ D BLOK 44 NUMARA
YENİMAHALLE /ANKARA

KOSOVA OFFİCE

NENE TEREZA NO:150
FUSHE /KOSOVE

ROMANIA OFFİCE

BUCURESTİ, STR. TRIUMFULUI
NR.8 SECTOR 1
BUCURESTİ/ ROMANIA

PRODUCT WAREHOUSE

BİTİK KÜME EVLERİ NO:195
KAHRAMANKAZAN/ANKARA

CONTACT

www.stateelektrik.tr

info@stateelektrik.tr

+90 554 014 14 30